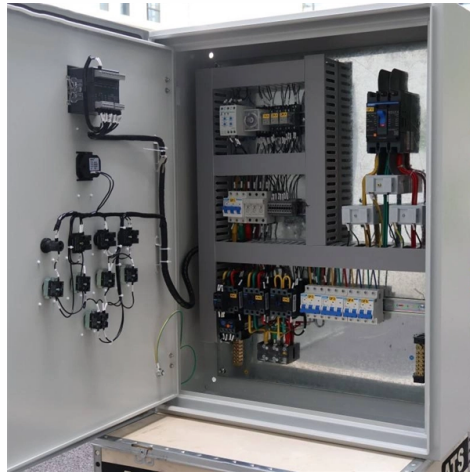


What are the bases for telecommunications towers



Overview

At the base of every telecommunication tower is the equipment shelter, often referred to as the tower's "brain. These towers receive, amplify, and transmit radio signals, ensuring that mobile devices can make calls, send texts, and access the internet seamlessly across broad. Cell towers play a crucial role in connecting us to the digital world, enabling seamless communication and data exchange. To understand how these towering structures function, it's essential to delve into their primary components. In this article, we'll break down two key elements: antennas and. The idea of base stations is anchored in their function to provide coverage, capacity, and connectivity, hence allowing for extending the working capabilities of mobile phones and other radio gear. What is Base Station?

What is Base Station?

A base station represents an access point for a wireless. Telecommunication towers, often called cell towers or cellular base stations, are robust steel structures engineered to transmit and receive radio frequency (RF) signals, enabling wireless communication across 2G, 3G, 4G, and 5G networks.



Article Content

Mar 30, 2026

Towers, Masts, and Poles Information

Guyed towers use guy wires to support antennas and communication equipment for telecommunication, radio transmission, cellular, and wireless applications. Masts

Dec 14, 2025

How Do Telecommunication Towers Work?

Telecommunication towers receive and transmit radio waves to enable wireless communication. Learn more about different types and their

Nov 30, 2025

Types of Cell Phone Towers with 5 examples for mobile

Types of cell towers including their components and functions used in mobile communication networks scribe 5 examples of cell phone tower types.

Aug 17, 2025

Understanding Macro Towers: The Backbone of Wireless

Understanding Macro Towers: The Backbone of Wireless Telecommunications Macro towers, also known as cell towers or base stations, are tall structures designed to support antennas and other

Aug 10, 2025

Comprehensive Guide to Civil Construction for Telecom

Introduction Civil construction for telecom tower sites involves a series of well-defined steps aimed at creating a robust foundation for

Apr 05, 2026

Finland Telecom Market Report: Size, Growth, Trends

Finland Telecom Market size is projected to reach USD 10.0 Billion by 2032, growing at a CAGR of 5.5% from 2026 to 2032 The report provides key trends, growth

Nov 28, 2025

Base Stations

The present-day tele-space is incomplete without the base stations as these constitute an important part of the modern-day scheme of wireless

Sep 02, 2025

Heavy Duty Monopole Telecom Tower with Multi Platform Support

Advanced Monopole Solution for Modern Telecommunication Our Monopole Communication Tower is engineered to meet the growing demands of 5G and 4G LTE network expansion. Designed with a

Apr 02, 2026

Different Types of Telecom Towers: A Comprehensive

Telecommunication towers remain pivotal in our ever-evolving communication landscape, facilitating the transmission and reception of signals

Jul 29, 2025

A Field Guide To The North American Communications

AM radio and other low-frequency towers fall into this category. In this article, I'm going to focus on a particular species of communications tower — the

Jul 16, 2025

Types of Telecom Towers & Their Key Applications

In conclusion, the varied collection of telecom towers plays a vital role in enabling efficient and reliable communication networks worldwide. Each type of tower

Dec 06, 2025

How do cell towers work? What are they used for?

Alongside fiber optics, cell towers, also known as base stations, are an essential component to wireless communication networks. They facilitate data

Dec 15, 2025

Radio masts and towers

Radio masts and towers KVLY-TV mast Radio masts and towers are typically tall structures designed to support antennas for telecommunications and

Oct 23, 2025

Working Principles and Classifications of Cell Towers

Cell towers are usually built by tower companies or wireless carriers when they expand the coverage or capacity of their networks, thus providing better reception

Oct 10, 2025

Types of Cell Sites

The tower could be owned by T-Mobile or Verizon, or one of the two carriers might have sold the tower to a third-party tower company such as American Tower or

Dec 15, 2025

Cell Tower Components: Antennas vs. Base Stations Explained

Antennas are responsible for radiating signals, while base stations manage the data processing and communication flow. Together, they form a robust network that supports the multitude of devices we

Oct 06, 2025

How Telecommunication Towers Work: The Backbone

Telecom towers transmit and receive RF signals, forming a network of cells that enable communication. They are built as monopoles, lattices, or guyed

Feb 27, 2026

Understanding The Anatomy of a Telecommunication Tower

At the base of every telecommunication tower is the equipment shelter, often referred to as the tower's "brain." This structure houses the electronic equipment necessary for processing and

Jan 09, 2026

Understanding Macro Towers: The Backbone of Wireless Telecommunications ...

Macro towers, also known as cell towers or base stations, are tall structures designed to support antennas and other telecommunications equipment. These towers are crucial for enabling wireless

Jun 11, 2026

Types of Telecom Towers & Their Key Applications

Self-Supporting Towers: Also known as free-standing or lattice towers, self-supporting towers are the most common type of telecom towers. They feature a

Dec 10, 2025

Telecommunication Tower Reinforced Concrete Foundation

Telecommunication Tower Reinforced Concrete Foundation Telecom (Telecommunications) towers are a generic description of radio masts and towers built primarily to hold telecommunications antennas.

Mar 27, 2026

Base Stations and Cell Towers: The Pillars of Mobile Connectivity

Conclusion Base stations and cell towers are foundational to the functionality and expansion of cellular networks. They enable the connectivity that powers our mobile communications

Sep 24, 2025

Engineered for Performance: Telecommunication Towers by Vizona

Our towers can be custom-designed to suit specific project needs, including challenging terrain or unique technical specifications. Our engineering team works closely with you to develop the optimal

Dec 26, 2025

Salary: Telecom Tower Engineer (May, 2026) | Glassdoor

The average salary for a Telecom Tower Engineer is £34,214 per year in United Kingdom. Click here to see the total pay, recent salaries shared and more!

Aug 15, 2025

What are Cell Towers and How Do They Work?

Everything You Ever Wanted to Know About Cell Towers Do you ever wonder how your phone stays connected no matter where you go? The secret

Sep 29, 2025

How Do Telecommunication Towers Work? A Comprehensive Guide

The critical components of a telecom tower contribute to its functionality as follows: antennas (30%), transceivers (25%), backhaul systems (15%), power systems (15%), Faraday Cage

Mar 30, 2026

What Is a Telecom Base Station and How Does It Work?

In essence, the telecom base station is the wireless bridge that connects every mobile user to the digital world. It not only enables voice and data communication

Dec 22, 2025

How Do Telecommunication Towers Work? A Comprehensive Guide

Introduction In 2025, telecommunication towers stand as engineering marvels, driving global connectivity by powering 5G networks for smart cities, autonomous vehicles, and disaster

May 21, 2026

What Is a Cell Tower and How Does a Cell Tower

In today's hyper-connected world, cell towers are the unsung heroes behind the seamless communication we rely on daily. But have you ever stopped

Contact Us

For more information, pricing, or custom solutions, please contact us:

Website: <https://www.piano-lessons.co.za>

Email: info@piano-lessons.co.za

Phone: +31 6 37258914

Address: Herengracht 123, 1015 BT Amsterdam, Netherlands

This document is for informational purposes only. Specifications subject to change without notice.

