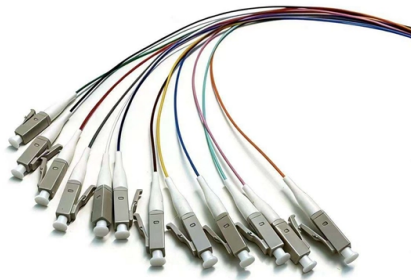


# Standard for Labeling Elevator Distribution Boxes



## Overview

This section specifies the type of labeling information required and includes available incident energy and personal protective equipment (PPE) categories. These requirements are echoed in NFPA 70-2017: National Electrical Code (NEC), Article 110. This is an internal LLNL standard meant to guide the design of new facilities, facility modifications, and. The purpose of this document is to provide a standard general template for consistency in labelling of distribution primary equipment. This Standard covers all labelling to be secured to distribution primary equipment on Horizon Power's distribution network and represents the minimum requirements. Each sign and outline lighting system, or feeder circuit or branch circuit supplying a sign or outline lighting system, shall be controlled by an externally operable switch or circuit breaker that will open all ungrounded conductors. For those not familiar it can be a little confusing at first. Often when IEC. Consistent documentation is an important safety strategy for electrical engineers and facility operators. " That is until the NEC introduced Section 110.



## Article Content

Nov 28, 2025

Getting important labelling right leaves a lasting impression

Getting important labelling right leaves a lasting impression What you leave behind after an installation speaks volumes. While electrical labelling is most importantly

Dec 04, 2025

What are the Requirements for Electrical Panel Labeling?

The labels that are required for electrical boxes will usually focus on two things. The first is going to be safety-related labels. This could be something like a label to indicate how many volts are on a

Aug 07, 2025

1910.306

Warning labels or signs that read "DANGER - HIGH VOLTAGE - KEEP OUT" shall be attached to the equipment and shall be plainly visible where persons might contact energized parts when doors are

Aug 02, 2025

Circuit Numbering and Labeling for Electrical Equipment

This standard describes requirements for numbering and labeling of real property electrical distribution equipment, circuits, and site lighting at Lawrence Livermore National Laboratory.

Jun 28, 2025

ST\_240-75659760 Rev 3 Pole top metering kiosks\_

This standard specifies Eskom's requirements for pole-mounted service distribution boxes for split prepayment metering. This standard also sets out Eskom's requirements for the manufacturing of

Jan 25, 2026

GUIDELINES PACKING & LABELLING

Goods must be delivered on European standard pallets (EUR-pallet or EPAL) or equivalent, with dimensions of 1200mm x 800mm, and they should not exceed these dimensions.

Jul 15, 2025

IEC Standard for Power Distribution Board Design and

Final Thoughts on Power Distribution Board Design Designing a power distribution board that complies with IEC Standards is essential for safety,

Jan 01, 2026

Elevator control PB panelboard design guide

The Elevator Control Panelboard is designed to replace multiple components provided in elevator control rooms, thus consolidating and standardizing this area. With the ability to control up to four

Mar 12, 2026

Packaging and Marking Guideline

The starting point for selecting the correct Shock-Watch® label is the size of the package in cubic meters (L x W x H) as well as the total weight including packaging.

May 04, 2026

Wiring regulations: what are the labelling requirements?

So, while you could create and print on-site, for convenience, using earlier electronic labellers would still require more time and effort compared to

Jul 03, 2025

Heavy-Duty Machine Room-Less Elevator Design Guidelines

Heavy-Duty Machine Room-Less Elevator Design Guidelines Abstract: This document provides design guidelines for the fabrication, installation, and testing of MRL elevators.

Dec 16, 2025

Elevator Standard Codes and Standards All Buildings

Guide to key elevator codes and standards building owners should know to ensure safety, compliance, and proper maintenance.

Oct 14, 2025

What Is a Box Elevator and When Do You Need One?

A box elevator (or package elevator) is essentially just another term for a vertical reciprocating conveyor (VRC): A lift designed to move materials —

Apr 19, 2026

Elevator control panelboard

The elevator control panelboard is ideal for installations with a single feeder to multiple elevators within the same elevator core. Built on the time-proven Cutler-Hammer Pow-R-Line 4F panelboard chassis,

Oct 03, 2025

### Elevator Controls and Indicators

Elevator Controls and Indicators for Lobbies The illustration below shows the three items required in an elevator lobby: the floor designators, the call

Dec 09, 2025

### Strategies for electrical labeling and documentation

Learn best practices for documenting and labeling electrical equipment. Offer solutions and tips for electrical distribution system documentation. Consistent documentation is an important safety

May 27, 2026

### Supplier Packaging Guidelines

These guidelines are intended to inform suppliers about minimum packaging performance requirements and ensure delivered quality throughout the TKE supply chain.

May 04, 2026

### Quality Control for Installation and Construction of Electrical Riser ...

Master the key quality control methods for electrical riser & distribution box installation. Ensure safety, compliance, and prevent hazards in building electrical systems.

Apr 22, 2026

### Requirements And Specifications For Installation Of

In flammable and explosive environments, explosion-proof distribution boxes should be selected and explosion-proof treatment should be carried out.

Mar 12, 2026

### Service Equipment Labeling — NEC 2017 110.16(B)

In this article, we will review what installations are impacted, what the options are for compliance, and reference other requirements of the NEC that we

Dec 06, 2025

### Electrical Panel Labeling Standards: Easy Guide

Electrical panel labeling standards come from many regulatory agencies, so it's important to learn about the specific requirements that apply to your workplace.

Feb 01, 2026

Electrical

Provide labels, nameplates, panel directories and color-coding as specified herein and according to attached electrical identification drawings.

Feb 24, 2026

MTA NYCT Specifications and Standards

Perform arc flash risk assessment where there is a potential arc exposure and produce caution labels indicating appropriate Personal Protective Equipment (PPE) as per electrical Standard Drawing STD

Jun 23, 2026

Discover Electrical Labeling Standards for OSHA

Beyond safety, labeling plays a central role in regulatory compliance. Labeling standards such as NFPA 70E mandate specific label types, wording,

Jan 18, 2026

The installation requirements for the distribution box

Learn how to install a distribution box safely and correctly. Covers wiring, placement, standards, and expert tips for a compliant setup.

Dec 13, 2025

IEC Reference Designations

IEC Related Standards Designation IEC 81346: Structuring principles and reference designations IEC 61175: Designation of signals IEC 61666:

May 17, 2026

Standard: General Template Labelling Standard for Distribution

This Standard covers all labelling to be secured to distribution primary equipment on Horizon Power's distribution network and represents the minimum requirements applicable to all labels applied to the

## Contact Us

For more information, pricing, or custom solutions, please contact us:

Website: <https://www.piano-lessons.co.za>

Email: [info@piano-lessons.co.za](mailto:info@piano-lessons.co.za)

Phone: +31 6 37258914

Address: Herengracht 123, 1015 BT Amsterdam, Netherlands

This document is for informational purposes only. Specifications subject to change without notice.

