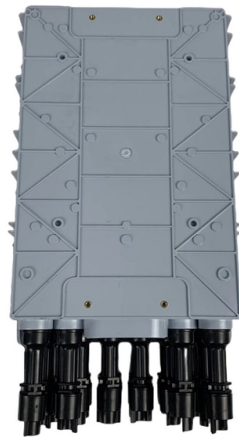


# Is the aggregation device a switch or a network device



## Overview

An aggregation switch is a network device that consolidates traffic from multiple access switches, wireless access points, or other edge devices and forwards it to core switches or routers. By bundling multiple network connections into a single high-bandwidth link, aggregation switches help. An Aggregation or "Top-of-Rack" switch is designed to connect everything in a rack at high speeds, then have an even bigger pipe out to the rest of the network. The Pro Aggregation does this with its SFP28 25Gbps ports. This article looks at what each such tool does, compares how they differ from each other, and offers suggestions as to what sort of network each. Aggregation services in routers and edge platforms help enable network edge routing. Why would a large enterprise need an. Cisco's three-tier network architecture model is widely used in network design to bring users a secure, reliable, scalable, and cost-effective interconnect network.



## Article Content

Mar 30, 2026

### Aggregation Router

An "Aggregation Router" is a device located in the services aggregation layer of a data center LAN that integrates important network services such as firewalls and server load balancers, allowing them to

May 04, 2026

### Understanding Switch Aggregation: A Comprehensive

This blog post explains link aggregation as a way of bundling individual Ethernet links together so they act as a single logical link. Extreme

May 04, 2026

### What Are Aggregation Service Routers (ASR)?

What Are Aggregation Services Routers (ASR)? Aggregation services in routers and edge platforms help enable network edge routing. These devices combine traffic

Dec 29, 2025

### Core, Aggregation, or Access Switches? Choose the

Discover the crucial differences between core, aggregation, and access switches. Find out which type can best transform your network's

Jan 21, 2026

### Everything You Need to Know About Aggregation Switch

Aggregation switches are essential for enterprise networks, providing high-speed connectivity between multiple switches and devices. They collect data

Apr 20, 2026

### What is an Aggregation Switch?

Conclusion: What is an aggregation switch? In network architecture, they are now extremely important. The technology behind these switches is link aggregation which is the process

Jan 31, 2026

### In-depth analysis: What is an aggregation switch?

In many network constructions, we have all heard of switches. So do you really understand switches? Why are aggregation switches often overlooked?

Jun 08, 2026

## Aggregation Network

In-network aggregation (INA) technology is a new approach to accelerate aggregation tasks and reduce traffic by offloading aggregation function on network switches.

Oct 14, 2025

## Everything You Need to Know About Aggregation Switch

A: An aggregation switch, also known as a network switch, is a device that combines multiple network connections into a single, high-bandwidth

Sep 23, 2025

## Difference between an access switch and aggregation switch?

Hi There, I would like to know what the difference is between the access switches and an aggregation switch. We are looking at a environment where we are quoting on 2 x MS225-48LP

Mar 20, 2026

## What is Link Aggregation (LAG) in Networking?

Link aggregation, sometimes referred to as LAG, which stands for Link Aggregation Groups, refers to the feature of network devices that allow the combining of

Mar 14, 2026

## Network Devices

A switch is a high-speed networking device that connects devices (computers, printers, servers) within a Local Area Network (LAN), Unlike hub,

Dec 19, 2025

## What is an Aggregate Switch?

Aggregate Switch Functionality What is an Aggregate Switch? It's fundamentally a traffic manager. It receives data from numerous sources (typically access switches serving end-user

Sep 05, 2025

## Redundancy and Link Aggregation in Industrial

Network Redundancy and Link Aggregation are essential features of managed industrial switches eliminates this single point of failure by providing

May 27, 2026

## What is Aggregation Switch? Role in Network Connection

An Aggregation Switch is a type of Network Switch that allows multiple network connections to be combined into a single link. This helps to

Aug 19, 2025

## What is an Aggregation Switch?

It is a networking tool called an aggregation switch that enables the consolidation of several network connections into a single link. This makes it possible to boost bandwidth and

Aug 24, 2025

## What is an Aggregation Switch?

Unlike the core switch, the aggregation switch can choose either the layer 2 switch or the layer 3 switch. When the layer 2 switches are selected, the

Aug 06, 2025

## What Are Aggregation Service Routers (ASR)?

Aggregation services in routers and edge platforms help enable network edge routing. These devices combine traffic links at greater speeds to support the

May 12, 2026

## What Is an Aggregation Switch?

What Is an Aggregation Switch? Unveiling the Network's Backbone An aggregation switch is a powerful networking device that consolidates connections from multiple access switches,

Mar 26, 2026

## 5 reasons you should use link aggregation on your NAS

Depending on your NAS, network switch, and router combination, link aggregation can also offer advanced features like

May 31, 2026

## What is an Aggregation Switch?

The aggregation switch is located in the middle of the network architecture, which is equivalent to a middle-level manager of a company. It

Aug 16, 2025

## Aggregation Switch

An Aggregation or "Top-of-Rack" switch is designed to connect everything in a rack at high speeds, then have an even bigger pipe out to the rest of the network.

Jun 25, 2026

What is an Aggregate Switch?

An aggregate switch is a high-capacity network switch that consolidates connections from multiple access switches, acting as a central point for managing network traffic and providing

Mar 01, 2026

What Is an Aggregation Switch and How to Choose?

An aggregation switch is a network device that consolidates traffic from multiple access switches, wireless access points, or other edge devices and

Nov 29, 2025

What is Aggregation Switch? Role in Network Connection

Aggregation Switch plays an important role in the aggregation layer, supporting the connection and management of traffic from different network devices.

Dec 02, 2025

Network Switches for Business Environments | Omada

Omada network switches provide the wired infrastructure connecting access points, servers, computers, and networked equipment across your business. From small

Jul 16, 2025

What is Switch Aggregation, Its Role and Selection Advice

What is switch aggregation? Switch aggregation refers to the concept of consolidating multiple access layer switches into a single aggregation layer switch in a traditional three-tier network

Dec 16, 2025

Why You Need a Fiber Aggregation Switch and How it

A: A network device referred to as the fiber aggregation switch consolidates links from several access switches to a few uplinks of higher

Feb 12, 2026

Aggregation Switch

An aggregation switch refers to a type of switch used to connect multiple ToR switches to a core switch/router in a cloud data center network. It enables high-bandwidth aggregation ports to be

## Contact Us

For more information, pricing, or custom solutions, please contact us:

Website: <https://www.piano-lessons.co.za>

Email: [info@piano-lessons.co.za](mailto:info@piano-lessons.co.za)

Phone: +31 6 37258914

Address: Herengracht 123, 1015 BT Amsterdam, Netherlands

This document is for informational purposes only. Specifications subject to change without notice.

